


### Load Data



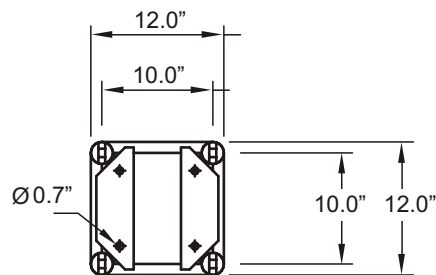
span (ft)	Uniform Loads			Center Pt. Load		Third Pt. Load		Quarter Pt. Load	
	load (plf)	load (lbs)	defl (in)	load (lbs)	defl (in)	load (lbs)	defl (in)	load (lbs)	defl (in)
5	729	3646	0.014	1243	0.008	622	0.007	615	0.009
10	362	3621	0.111	1218	0.060	609	0.052	606	0.071
15	240	3595	0.375	1192	0.203	596	0.174	598	0.240
20	145	2902	0.727	1167	0.476	583	0.410	589	0.567
25	91	2276	1.136	1138	0.921	571	0.795	569	1.082
30	62	1850	1.636	925	1.334	558	1.367	462	1.56
35	44	1538	2.227	769	1.828	545	2.159	385	2.127
40	24	950	2.235	475	1.867	356	2.276	238	2.143
45	13	581	2.235	291	1.915	218	2.271	145	2.155
50	7	336	2.235	168	1.981	126	2.264	84	2.172

### Component Weights

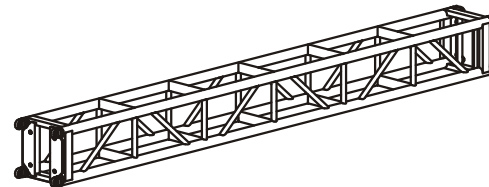
Part No	Description	WT (lbs)
O8LD10	10ft section	86
O8LD8	8ft section	75
O8MD5	5ft section	64
O8LD3M	3m section	86
O8LD2M	2m section	69
O8LD1M	1m section	51



### Dimensions



### 3d view



### Truss Features

#### Description

- External Dimensions
- Connection Centers
- Material Type
- Connector Type
- Maximum Certified Span
- Notes

#### Specification

- 12"w. x 12"h.
- 10"w. x 10"h.
- 6061-T6 Aluminum
- OMNI Connectors
- 50ft
- Also available in 12" x 18" wide format