


### Load Data



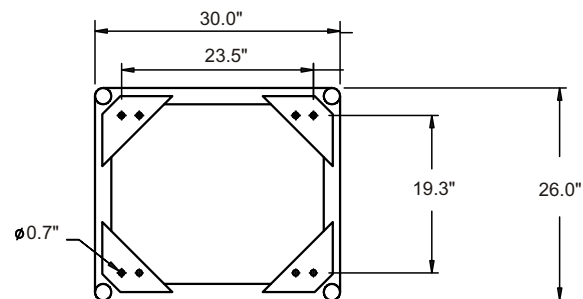
span (ft)	Uniform Loads			Center Pt. Load		Third Pt. Load		Quarter Pt. Load	
	load (plf)	load (lbs)	defl (in)	load (lbs)	defl (in)	load (lbs)	defl (in)	load (lbs)	defl (in)
8	842	6732	0.02	4888	0.02	2444	0.02	2244	0.02
15	445	6670	0.12	4826	0.14	2413	0.12	2223	0.15
22	295	6488	0.37	3244	0.30	2382	0.37	1622	0.36
29	166	4812	0.65	2406	0.53	1805	0.66	1203	0.62
36	105	3764	1.00	1882	0.82	1411	1.02	941	0.96
43	71	3036	1.43	1518	1.18	1139	1.46	759	1.37
50	50	2495	1.93	1247	1.60	936	1.97	624	1.85
57	36	2071	2.51	1036	2.11	777	2.55	518	2.41
64	27	1727	3.16	863	2.69	647	3.22	432	3.05

### Component Weights

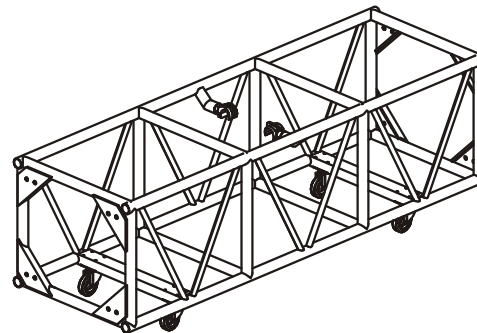
Part No	Description	WT (lbs)
DP8N	123" section Bolted connection	130
DP6N	93" section Bolted connection	109
DP4N	63" section Bolted connection	89
DPC2N	2 way corner section Bolted connection	40
DPC3N	3 way corner section Bolted connection	49
DPC4N	4 way corner section Bolted connection	58



### Dimensions



### 3d view



### Truss Features

#### Description

- External Dimensions
- Connection Centers
- Material Type
- Connector Type
- Maximum Certified Span

#### Specification

- 30" w. x 26" h.
- 23.5" w. x 19.28" h.
- 6061-T6 Aluminum
- 5/8" Grade 8 Steel nuts & bolts
- 64ft