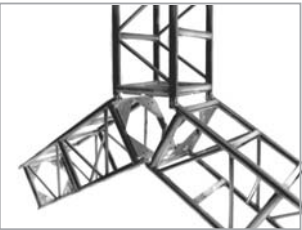
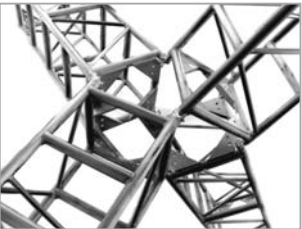
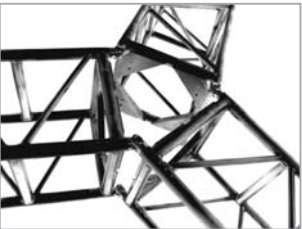


Configurations



The Omni Connector

The OMNI connector is quite probably the most versatile truss connector in the world. Whilst it looks very familiar, its features are "revolutionary" - literally!

Its first incarnation is as a standard fork end that can also be used as a hinge. The magic really starts to happen when you rotate the forks through 90 degrees and are able to use it as a hinged corner. Not only can the fork be rotated, but the male and female ends are interchangeable allowing for the first time, TOTALLY universal fork connector corner blocks. As if this wasn't enough the fork ends are removable which allows the truss to be used with it's conventional bolt plates, whilst the main chords are protected against crushing by the permanently installed fork receptor barrel. Other features include a double taper shear pin for ease of alignment, stainless steel construction and no fasteners protruding beyond the truss geometry.

Omni - Removable fork connection system
Operational Features

1. Option to remove forks and use conventional butt splice bolt plates.
2. Ability to change sex of connectors.
3. Ability to rotate connectors to create hinges and angles in any direction.
4. "Barrel" reinforces the tube ends against crushing

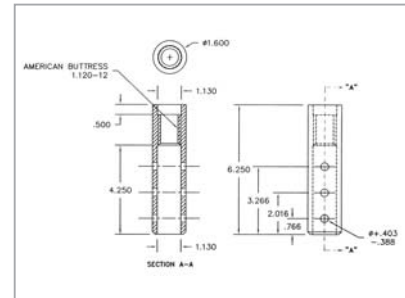
Construction Features

1. Made of Stainless steel.
2. Use of permanent insert "Barrel".
3. Use of "inline thread" for fastening.
4. Use of "American Buttress" type thread.
5. Double taper shear pin for ease of alignment.
6. "Barrel" Fastened in place w/ Spirol (Brand) roll pins.

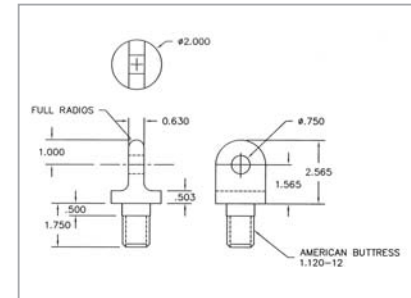
Connector images



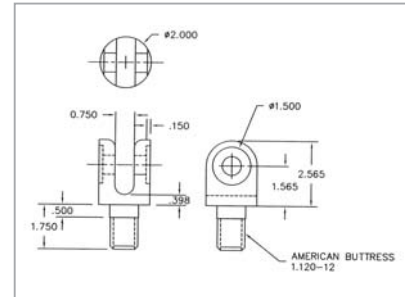
Assembly drawings



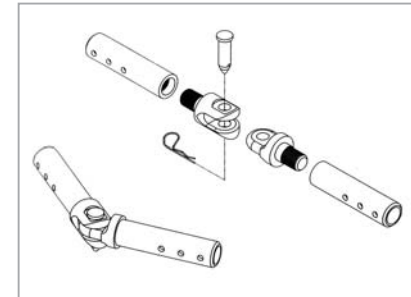
Omni removable fork end barrel



Omni removable male fork end



Omni removable female fork end



Omni connector assembly