


Load Data



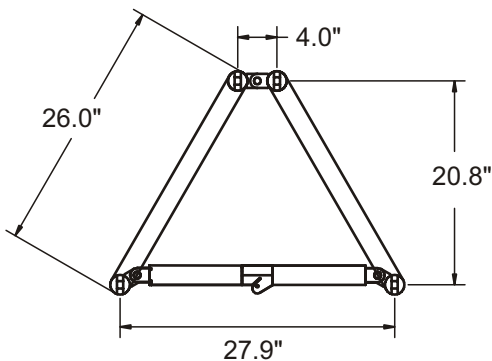
span (ft)	Uniform Loads			Center Pt. Load		Third Pt. Load		Quarter Pt. Load	
	load (plf)	load (lbs)	defl (in)	load (lbs)	defl (in)	load (lbs)	defl (in)	load (lbs)	defl (in)
5	1123	5616	0.01	3713	0.01	1857	0.01	1872	0.01
10	558	5582	0.04	3679	0.04	1840	0.04	1861	0.05
15	370	5548	0.13	3645	0.14	1823	0.12	1849	0.17
20	276	5514	0.32	3323	0.31	1806	0.28	1661	0.36
25	210	5255	0.59	2628	0.48	1789	0.55	1314	0.56
30	144	4317	0.85	2159	0.69	1619	0.87	1079	0.81
35	104	3637	1.16	1819	0.94	1364	1.19	909	1.11
40	78	3119	1.52	1559	1.24	1170	1.55	780	1.45
45	60	2708	1.92	1354	1.57	1016	1.96	677	1.83
50	47	2373	2.37	1186	1.95	890	2.41	593	2.27

Component Weights

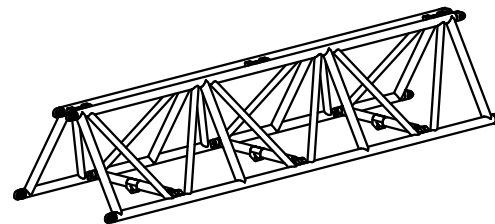
Part No	Description	WT (lbs)
FT10F	10ft section including truss pins	81
FT8F	8ft section including truss pins	70
FT5F	5ft section including truss pins	53
FT4F	4ft section including truss pins	48
FTC2	2 way corner section including truss pins	66
FTC3	3 way corner section including truss pins	77
FTC4	4 way corner section including truss pins	88



Dimensions



3d view



Truss Features

Description

- External Dimensions
- Connection Centers
- Material Type
- Connector Type
- Maximum Certified Span

Specification

- Please refer drawing
- Please refer drawing
- 6061-T6 Aluminum
- Aluminum Fork
- 50ft