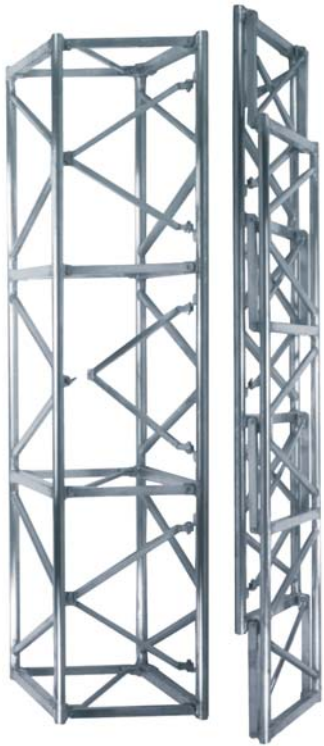


Fold Flat Medium Duty Truss



Component Weights

Part No	Description	WT (lbs)
FFT3M	3m section	112
FFT2M	2m section	84
FFT1M	1m section	56
FFTC4	4 way corner section	88
FFTS4N	4 way sleeve section	96

Load Data

span (ft)	Uniform Loads			Center Pt. Load		Third Pt. Load		Quarter Pt. Load	
	load (plf)	load (lbs)	defl (in)	load (lbs)	defl (in)	load (lbs)	defl (in)	load (lbs)	defl (in)
10	615	6153	0.038	4793	0.047	2396	0.04	2051	0.048
20	303	6060	0.305	4583	0.367	2350	0.322	2020	0.383
30	199	5955	1.026	2978	0.83	2233	1.048	1489	0.977
40	108	4303	1.825	2151	1.489	1614	1.862	1076	1.741
50	65	3274	2.851	1637	2.352	1228	2.907	819	2.727
60	43	2557	4.106	1278	3.433	959	4.181	639	3.938
70	19	1323	4.136	662	3.582	496	4.197	331	3.997
80	7	577	4.136	288	3.775	216	4.176	144	4.046

Truss Features

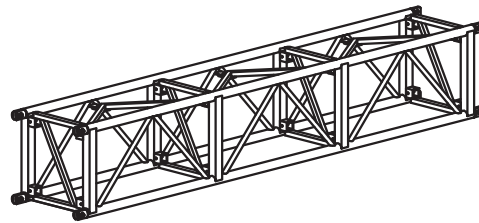
Description

- External Dimensions
- Connection Centers
- Material Type
- Connector Type
- Maximum Certified Span

Specification

- 20-1/2"w. x 20-1/2"h.
- 18-1/2"w. x 18-1/2"h.
- 6061-T6 Aluminum
- Steel fork ends
- 80ft

3d view



Dimensions

