

Ballast



Component Weights

Part No	Description	WT (lbs)
BT3	3 tank truss	408
BT2	2 tank truss	266
BT1	1 tank truss	142

Load Data

span (ft)	Uniform Loads			Center Pt. Load		Third Pt. Load		Quarter Pt. Load	
	load (plf)	load (lbs)	defl (in)	load (lbs)	defl (in)	load (lbs)	defl (in)	load (lbs)	defl (in)
5	1939	9696	0.01	4922	0.01	2461	0.01	2470	0.01
10	966	9658	0.04	4883	0.03	2442	0.03	2458	0.04
15	641	9620	0.13	4845	0.10	2423	0.09	2445	0.12
20	421	8425	0.27	4213	0.21	2403	0.21	2106	0.25
25	267	6672	0.41	3336	0.33	2384	0.40	1668	0.39
30	183	5489	0.60	2745	0.48	2059	0.61	1372	0.57
35	132	4634	0.81	2317	0.66	1738	0.83	1159	0.77
40	100	3983	1.06	1992	0.86	1494	1.08	996	1.01
45	77	3468	1.34	1734	1.10	1301	1.37	867	1.28
50	61	3049	1.66	1524	1.36	1143	1.69	762	1.58
55	49	2699	2.01	1349	1.66	1012	2.04	675	1.92
60	40	2400	2.38	1200	1.98	900	2.43	600	2.28

Truss Features

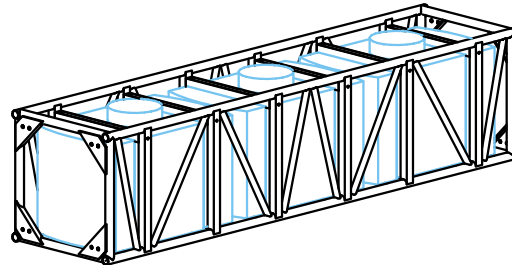
Description

- External Dimensions
- Connection Centers
- Material Type
- Connector Type
- Maximum Certified Span

Specification

- Refer to drawing
- Refer to drawing
- 6061-T6 Aluminum
- 5/8" Grade 8 Steel nuts & bolts
- 60ft

3d view



Dimensions

